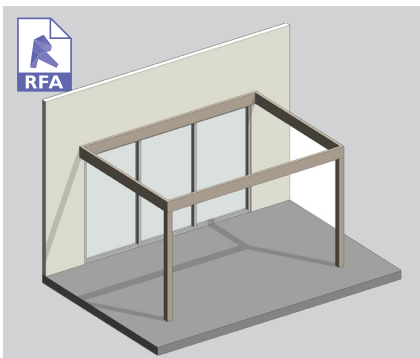


PRODUCT OVERVIEW STRUCTURAL FRAME BEAMS AND POSTS

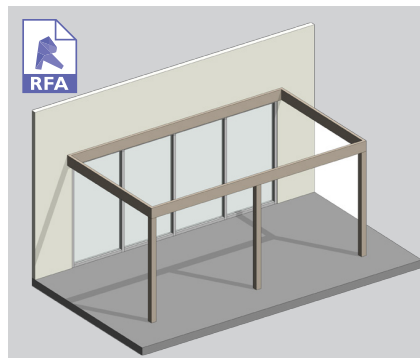


## THE LOUVRETEC STRUCTURAL FRAME

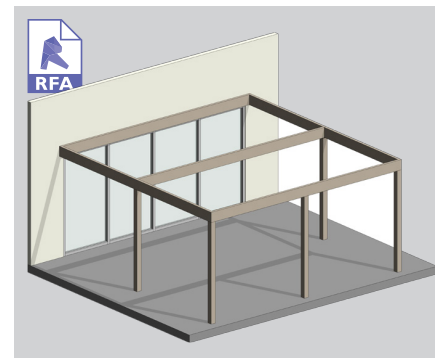
- Louvretec offers a fully engineered structural aluminium frame system specifically designed for Outdoor Rooms.
- Beams & posts are custom designed to be structurally compliant to the specific wind zone.
- Louvretec structural frames provide for clean, aesthetically pleasing lines and with regular cleaning, are virtually maintenance free.
- They are also designed to incorporate wall in-fills such as outdoor blinds, frameless sliding or slide & turn glass doors as well as a range of louvre panel infills.



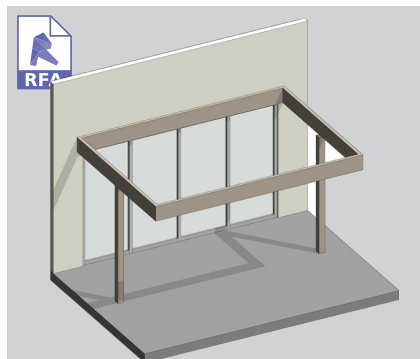
SIMPLY SUPPORTED



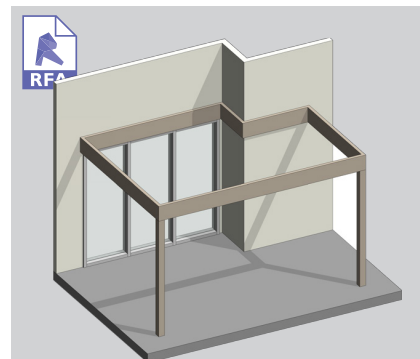
LENGTH EXTENDED - CONTINUOUS SPAN



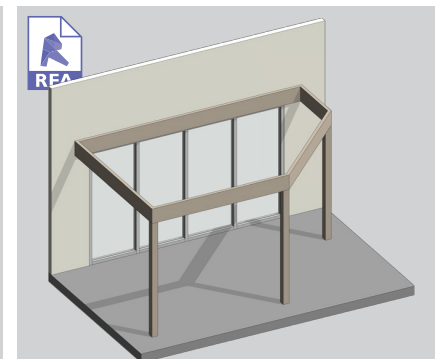
WIDTH EXTENDED



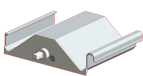
CANTILEVERED FRAME



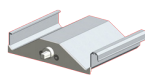
STEPPED FRAME



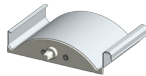
RAKING FRAME



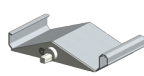
200 SUPER ROOF



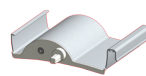
200 SUPER ROOF LITE



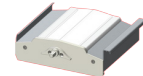
200 SUPER ROOF LITE CURVED



180 LINEAR



180 CLASSIC

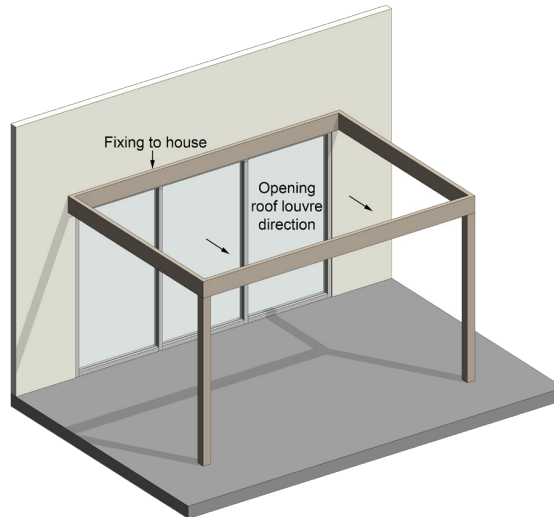


260 TRANSLUCENT



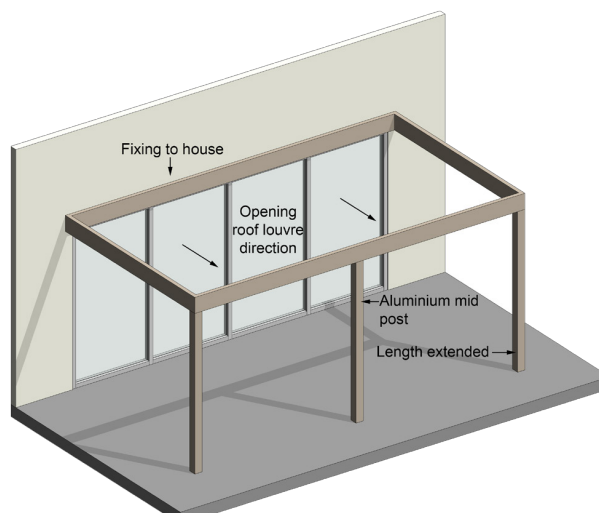
200 SUBURBAN DIRECT

TYPICAL DETAIL 3D MODELS SIMPLY SUPPORTED STRUCTURAL FRAME



Aluminium box section beams and posts. Beam and post sizes determined by spans and wind zones.

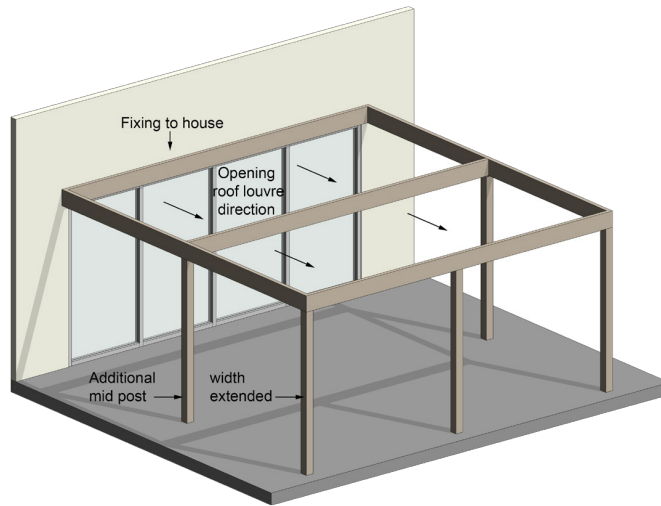
TYPICAL DETAIL 3D MODELS CONTINUOUS SPAN - LENGTH EXTENDED



Length of frame is extended with additional mid-post. Allows for a longer Opening Roof.

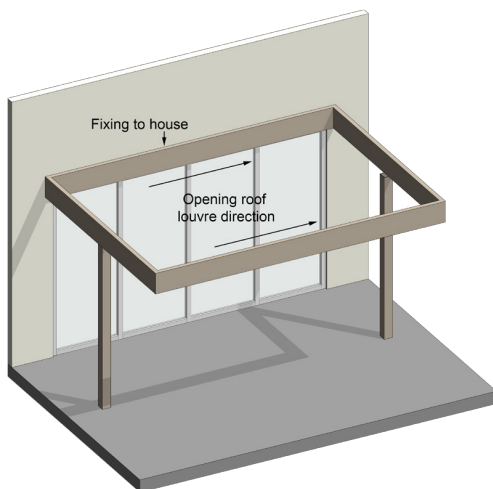
**TECHNICAL DETAILS** STRUCTURAL FRAME; BEAMS & POSTS

**TYPICAL DETAIL 3D MODELS WIDTH EXTENDED**

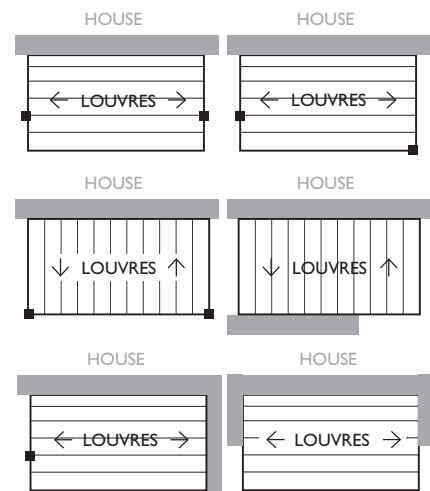


Width of frame is extended with additional mid post. Allows for two Opening Roofs.

**TYPICAL DETAIL 3D MODELS CANTILEVERED STRUCTURAL FRAME**

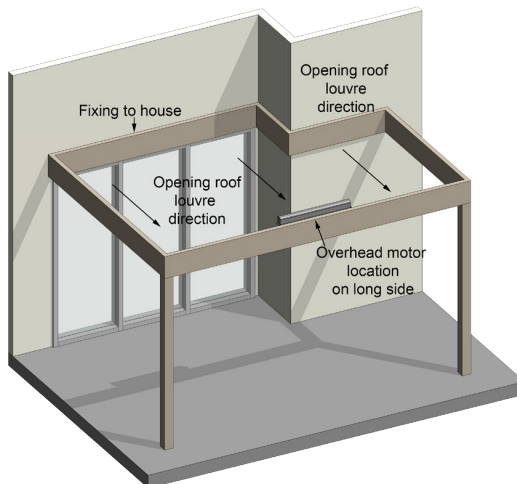


**CONFIGURATIONS AVAILABLE**



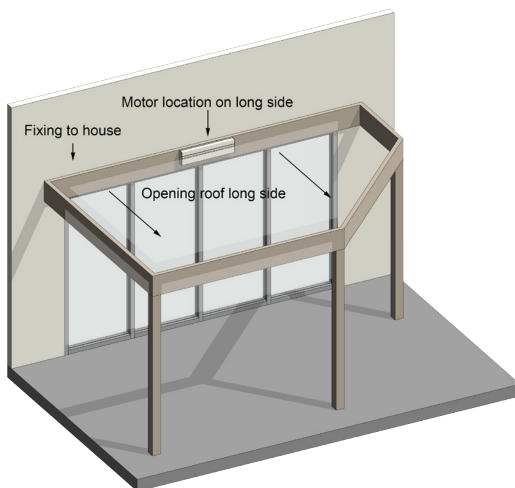
There are a number of cantilever configurations available. Contact Louvretec for engineering advice.

TYPICAL DETAIL 3D MODELS STEPPED FRAME



Frame designed to step around the building or fire place. Motor must be located on long side.

TYPICAL DETAIL 3D MODELS RAKING FRAME



Frame can follow the shape of the deck. Motor must be located on long side.